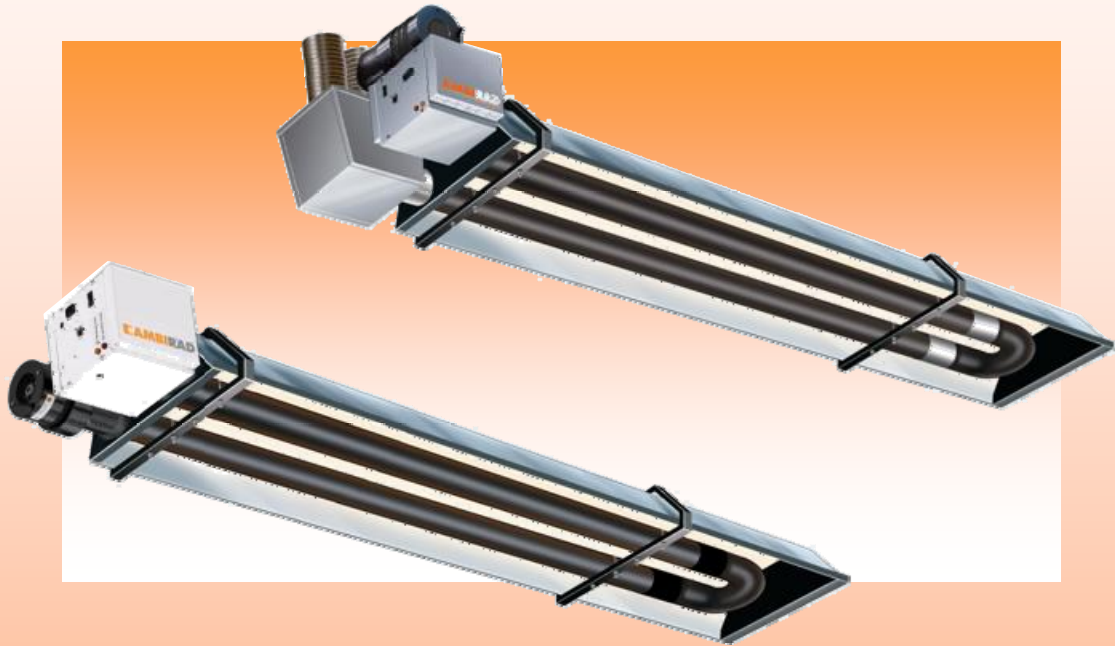


INSTALLATION OF DUCTED AIR KITS FOR THE VISION HEATER RANGE



INDEX

Section

Introduction	
Health and Safety -----	1
Tools and Parts Requirement -----	2
Step By Step Instructions -----	3

WARNINGS

AmbiRad equipment must be installed and maintained in accordance with the relevant provisions of the Gas Safety (Installations and Use) Regulations 1998 for gas fired products. Due account should also be taken of any obligations arising from the Health and Safety at Works Act 1974 or relevant codes of practice. In addition the installation must be carried out in accordance with the current IEE wiring regulations (BS 7671), BS 6896:2005 (Industrial & Commercial) and any other relevant British Standards and Codes of Practice by a qualified installer. All external wiring MUST comply with the current IEE wiring regulations.

Introduction.


This document describes the fitting method for the optional ducted air intake kit available for the AmbiRad Vision range of heaters.

All dimensions shown are in mm unless otherwise stated.

PLEASE READ this document prior to installation to familiarise yourself with the components and tools you require at the various stages of assembly.

 **The manufacturer reserves the right to alter specifications without prior notice.**

1. Health and Safety.

 Isolate electrical & gas supply to the heater and controller before proceeding.

1.1 Health and Safety

All installation, assembly and commissioning procedures must be carried out by suitably qualified competent persons to the statutory regulations in the country of use.

AmbiRad ducted air kits must be installed in accordance with the relevant provisions of the Gas Safety (Installations and Use) Regulations 1998. Due account should also be taken of any obligations arising from the Health and Safety at Works Act 1974 and relevant codes of practice currently in force.

When assembly, installation and commissioning is undertaken on radiant tube heaters specified in these instructions, due care and attention is required to ensure that working at height regulations are adhered to at the mounting heights specified.

For your own safety we recommend the use of personal protective equipment whilst fitting this kit.

2. Tools and Parts Requirement.

Tools:



1: Philips screwdriver



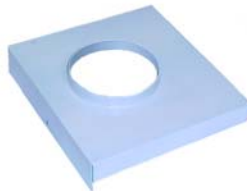
2: 7mm nut driver (optional)

Kit of parts:

Heater type	AmbiRad part No.
VSI	VSI-DA
VSF	VSF-DA



2 x 100mm Jubilee clips
(Part No. 7541)




1 x Ducted lid
(induced heaters only)
(Part No. 201097-Z)



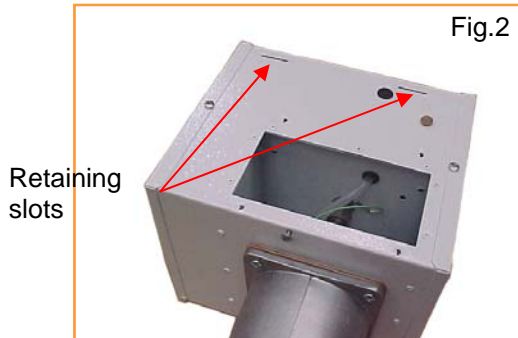
1 x 108mm Flexible coupler
(Part No. 201321)

3. Step By Step Instructions.

 Burners are shown removed from heaters for clarity.

1: VS, VSO & VSLI (induced) models:

a) Remove single retaining screw from the standard air intake lid as shown in fig. 1. Lift front of lid slightly and slide to the left to disengage locating lugs from the slots in the burner housing shown in fig.2



b) Fit the ducted air lid as shown in figs.3 & 4. Refit and tighten the retaining screw.



c) Fit one of the hose clips to the end of the flexible coupler. Slide the flexible coupler over the spigot on the ducted air lid and tighten the hose clip as shown in fig.5.

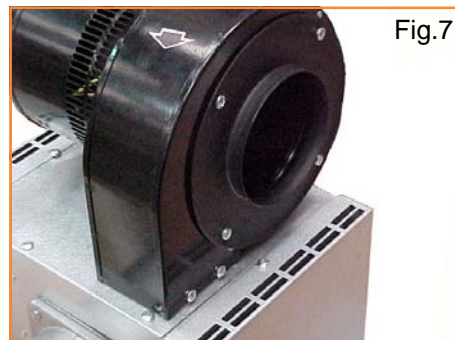


d) Fit the second hose clip to the opposite end of the flexible coupler. Slide the flexible coupler over the end of the pre-installed fresh air duct and tighten the hose clip as shown in fig.6.



2: VSLF (forced) models:

a) Fig.7 shows spigot on forced burner fan.



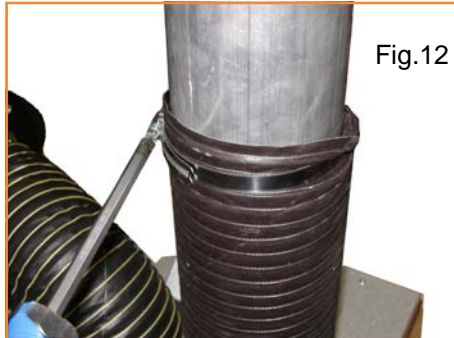
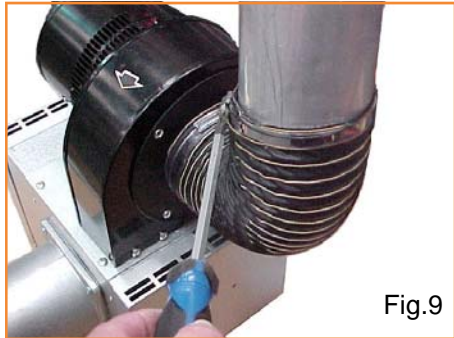
b) Fit one of the hose clips to the end of the flexible coupler. Slide the flexible coupler over the spigot on the fan inlet and tighten the hose clip as shown in fig. 8.



Step By Step Instructions cont.

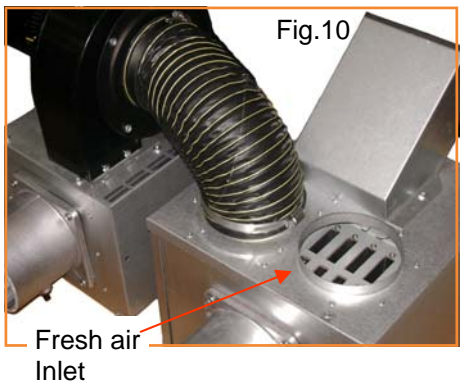
c) Fit the second hose clip to the opposite end of the flexible coupler. Slide the flexible coupler over the pre-installed fresh air duct and tighten the hose clip as shown in fig. 9.
Note: It is acceptable to make up a 90° bend with the flexible coupler.

c) Fit the second hose clip to the opposite end of the flexible coupler. Slide the flexible coupler over the end of the pre-installed fresh air duct and tighten the hose clip as shown in fig.12.

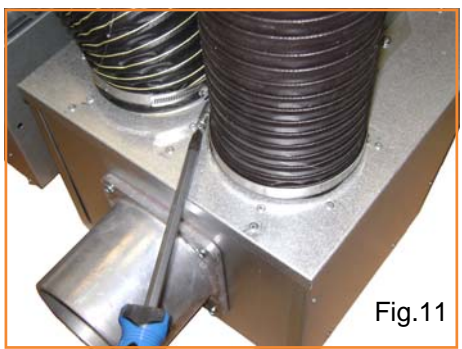


3: VSXE, VSXO & VSX (forced)

a) Fig. 10 shows the fresh air inlet spigot on the heat exchanger.



b) Fit one of the hose clips to the end of the flexible coupler. Slide the flexible coupler over the spigot on the heat exchanger then tighten the hose clip as shown in fig. 11.



AmbiRad Limited Fens Pool Avenue
 Brierley Hill West Midlands DY5 1QA
 United Kingdom.
 Telephone 01384 489700
 Facsimile 01384 489707
 Email info@ambirad.co.uk
 Website www.ambirad.co.uk
 Technical Support www.s-i-d.co.uk



AmbiRad is a registered trademark of AmbiRad Limited. Because of continuous product innovation, AmbiRad reserve the right to change product specification without due notice.